

San Telequip (P) Ltd.,  
504, 505 Deron Heights, Baner Road,  
Pune 411 045, India.  
Phone: +91-20-65001587, 9764027070, 8390069393  
Email: [info@santelequip.com](mailto:info@santelequip.com)



**Document Name :** User Manual for GSM/GPRS modem 232/485.

## INTRODUCTION

GSM/GPRS modem is a multi-functional, ready to use, rugged unit that can be embedded or plugged into any application. The modem can be controlled and customized to various levels by using the standard AT commands. The modem is fully type-approved, it can speed up the operational time with full range of Voice, Data, Fax and Short Messages (Point to Point and Cell Broadcast). The modem also supports GPRS (Class 12) for spontaneous data transfer.

## Features

- Quad Band 850/ 900/ 1800/ 1900 MHz
- Output power 2W for GSM 850/ 900, 1W for GSM 1800 /1900
- Control via AT commands (GSM 07.07 and 07.05)
- Interface-RS232 (DB9 female connector) or RS485 (3 pin screw type connector).
- Coding Scheme: CS1 to CS4
- CSD up to 14.4 kbps(Non-transparent)
- Mobile Originated (MO) and Mobile Terminated (MT),Cell Broadcast(CB),Text and PDU mode.
- Supports Internet service protocols TCP/UDP/FTP/HTTP/MMS
- Supports Packet Switched Broadcast Control Channel(PBCCH)
- Supports PAP protocol and USSD
- Supports auto-bauding for serial port from 4800 bps to 115200 bps.
- LED Indication for Power ON, Network status, Tx and Rx
- Dimensions: 93 x 78 x 33 mm ( excluding connectors)
- Weight: 125 grams
- Housing: Metallic Enclosure

## Installing the Modem

To install the modem, plug the device on the provided SMPS Adapter.

## Inserting/ Removing the SIM Card

To insert or remove the SIM Card, it is necessary to press the SIM holder ejector button with sharp edged object like a pen or a needle. When this is done the SIM holder comes out a little, then pull it out and insert or remove the SIM Card. Place the SIM card properly as per the direction of the installation. It is very important that the SIM is placed in the right direction for its proper working condition.

## Connecting External Antenna

Connect GSM/GPRS modem to the external SMA antenna male end. The frequency of the antenna should be set to GSM850/900/1800/1900. The right Antenna should be used with the specified frequency or else the antenna can damage the modem or it can affect the communication.

**Power Supply** – Screw type connector with 9-30V DC, 2A supply.

## Modem connection to external devices:

### Connectors

Connector	Function
SMA	RF antenna connector
9 pin D-SUB / 3 pin screw type	RS232 link / RS485 link
Adaptor Socket	Power supply connector
SIM card holder	SIM card

San Telequip (P) Ltd.,  
 504, 505 Deron Heights, Baner Road,  
 Pune 411 045, India.  
 Phone: +91-20-65001587, 9764027070, 8390069393  
 Email: [info@santelequip.com](mailto:info@santelequip.com)



**LED Indicators**

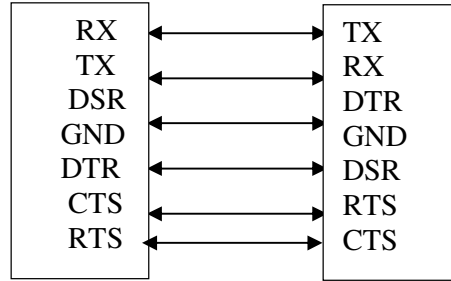
Network status/GPRS connectivity, Power ON, Tx and Rx status while data transmission.

**RS232 Cable details**

**9 – PIN D-SUB Female Connector**

PIN	NAME	Designation	Type
1	NC	-	-
2	Tx	Transmit Data	Input
3	Rx	Receive Data	Output
4	DSR	Data Set Ready	Output
5	GND	Ground	Ground
6	DTR	Data Terminal Ready	Input
7	CTS	Clear to send	Output
8	RTS	Request to send	Input
9	NC	-	-

**9- PIN Serial Male to Female Cable Details**



9 Pin male side

9 Pin female side

**RS485 Cable details**

**3 pin screw type connector**

PIN	NAME
1	D+
2	D-
3	GND

**TROUBLESHOOTING:**

**Q. The modem does not answer through the serial link**

- A) Check Power input of the modem
- B) Check for proper connections as given in PIN DETAILS section of User manual
- C) Check for communication port is properly configured.  
 The factory setting for the baud rate is 9600 bps.
- D) Close any other application running on the port that you are using for modem

**Q) The modem always returns «Error» when trying to issue a communication**

Issue AT+CMEE=1 to have extended error code and retry

## Modem basic operation

### (A) Modem connection with Hyper Terminal

- 1) Open Hyper Terminal from **All Programs** → **Accessories** → **Communications**
  - 1) **Establish Connection-**



#### 2) Setting up usage port-

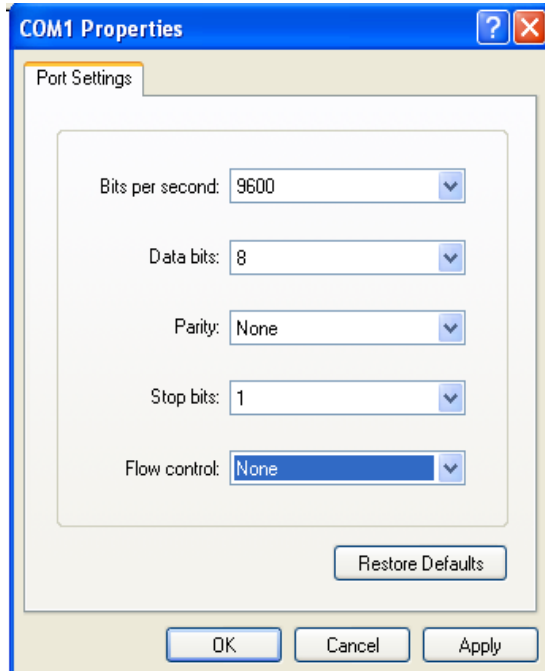


San Telequip (P) Ltd.,  
504, 505 Deron Heights, Baner Road,  
Pune 411 045, India.  
Phone: +91-20-65001587, 9764027070, 8390069393  
Email : [info@santelequip.com](mailto:info@santelequip.com)

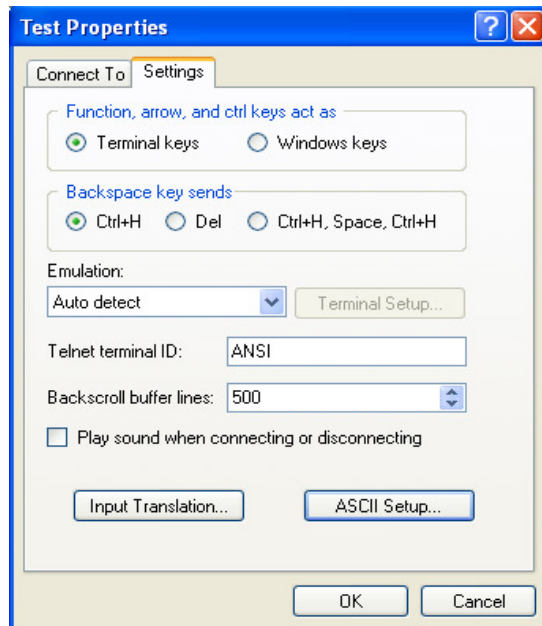


Connecting. Converting. Leading !

### 3) Setting up Port Parameters-



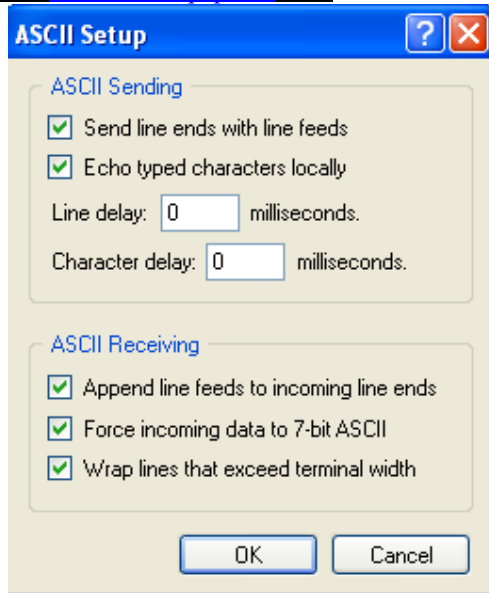
### 4) Setting up Property in File menu of Hyper Terminal



San Telequip (P) Ltd.,  
504, 505 Deron Heights, Baner Road,  
Pune 411 045, India.  
Phone: +91-20-65001587, 9764027070, 8390069393  
Email : [info@santelequip.com](mailto:info@santelequip.com)



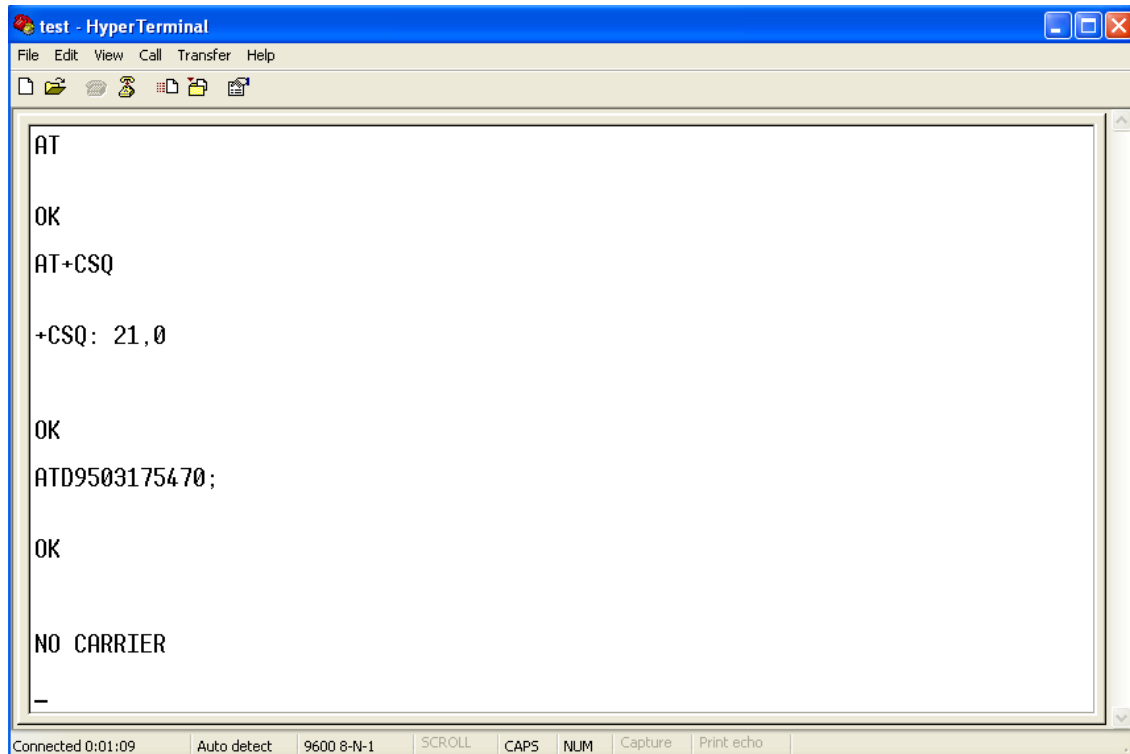
Connecting. Converting. Leading !



2) Testing of basic **AT commands** -

Type "**AT**" word and press "**ENTER**" key. You should get response as "**OK**". Means modem is connected properly. All Commands are executed by pressing ENTER Key.

Follow following sequence of AT commands-



San Telequip (P) Ltd.,  
504, 505 Deron Heights, Baner Road,  
Pune 411 045, India.  
Phone: +91-20-65001587, 9764027070, 8390069393  
Email : [info@santelequip.com](mailto:info@santelequip.com)



Connecting. Converting. Leading !

**For sending SMS use following AT commands.  
Also type "ctrl z" to send message.**

```
test - HyperTerminal
File Edit View Call Transfer Help
[Icons]
AT+CMGF=1
OK
AT+CMGS="9503175470"
> TEST MESSAGE-
+CMGS: 2
OK
AT&W
OK
Connected 0:01:06 Auto detect 9600 8-N-1 SCROLL CAPS NUM Capture Print echo
```

**For more AT commands or details, see AT commands manual.**

#### **(B) GPRS INTERNET Access-**

Given below is the procedure for connecting GSM modem to a PC and establishing a GPRS connection to the internet through standard **"Dial-up-networking"**

Double click the **"Phone and Modems Options"** in **"Control Panel"**.

Double click the **"Phone and Modems Options"** icon.

Select the **"Modems"** tab.

Click the **"Add..."** button at the bottom of the menu

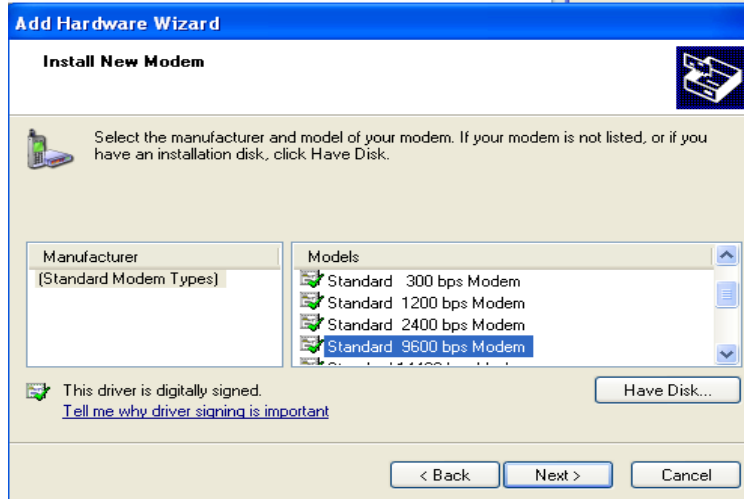
Make sure the **"Don't detect my modem; I will select it from a list."** Is selected.

Your next screen will ask you which modem you have, Make sure **"Standard 9600 bps Modem"** is selected.

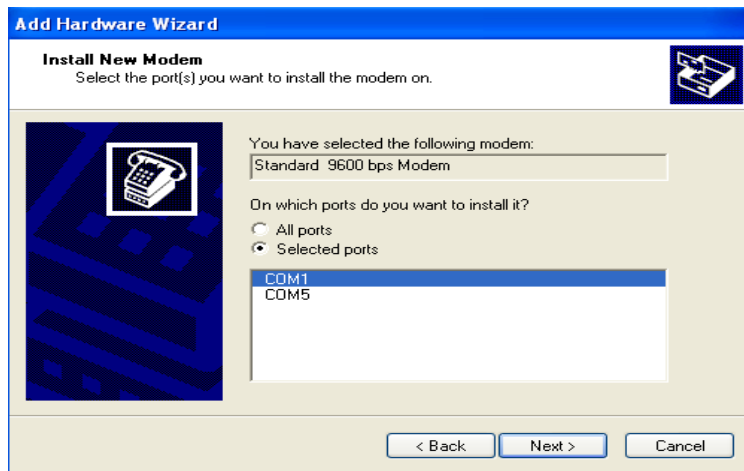
San Telequip (P) Ltd.,  
504, 505 Deron Heights, Baner Road,  
Pune 411 045, India.  
Phone: +91-20-65001587, 9764027070, 8390069393  
Email : [info@santelequip.com](mailto:info@santelequip.com)



Connecting. Converting. Leading !



The next screen will ask you which COM port your Modem is connected to.



Select COM port to which modem is connected as shown above and press **Next>**

You will then be greeted with a message saying **“Your modem has been set up successfully”**.

Press **“Finish”**

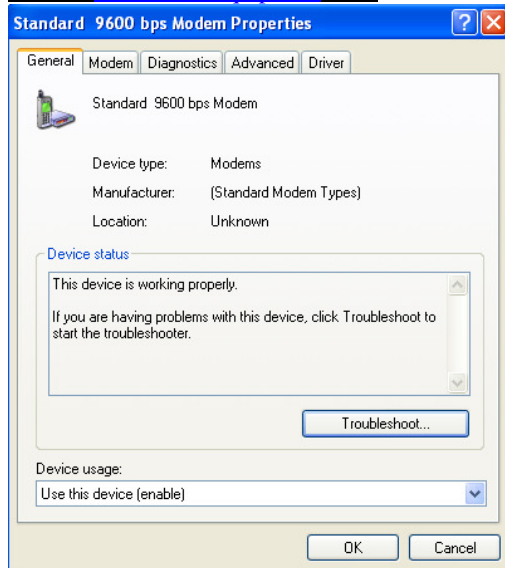
Select your Modem from the list in your **“Phone and Modems Options”** and click the **“Properties”** button.

A new window will appear as shown below.

San Telequip (P) Ltd.,  
504, 505 Deron Heights, Baner Road,  
Pune 411 045, India.  
Phone: +91-20-65001587, 9764027070, 8390069393  
Email : [info@santelequip.com](mailto:info@santelequip.com)

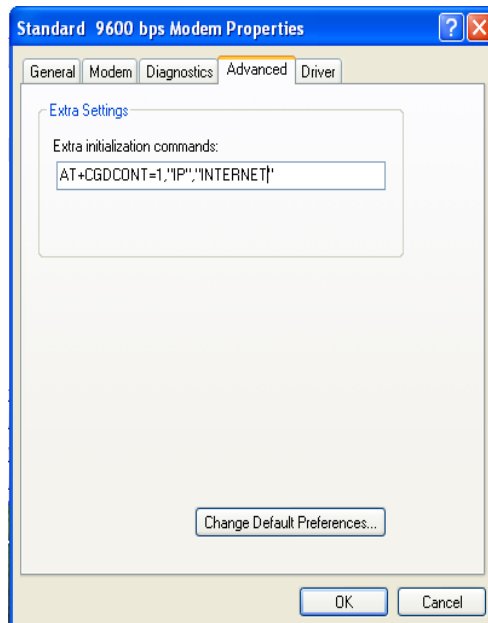


Connecting. Converting. Leading !



You can choose **“Diagnostics”** to test your modem to ensure you have selected appropriate COM port.

Click on **“Advanced”** Tab and enter the setting as shown below



Please note that you have to obtain APN(Access Point name) from your cell phone provider to replace “INTERNET” value in above settings.

You Can then establish a Dial up networking connection as following-

1. Double click **“My Network places”** icon.
2. Select **“View My Network Connections”**
3. Select **“Add a new Network connection”**



San Telequip (P) Ltd.,  
504, 505 Deron Heights, Baner Road,  
Pune 411 045, India.  
Phone: +91-20-65001587, 9764027070, 8390069393  
Email : [info@santelequip.com](mailto:info@santelequip.com)

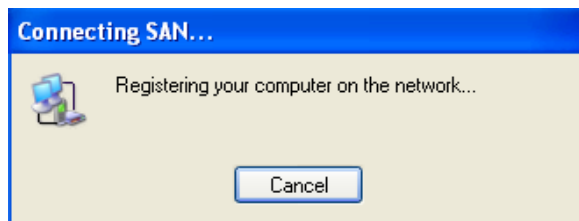


Connecting. Converting. Leading !

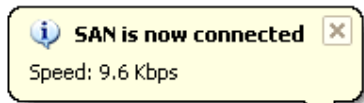
You have to dial number as **“\*99#”**.



Select Properties in above box.  
Select appropriate modem and press Dial.

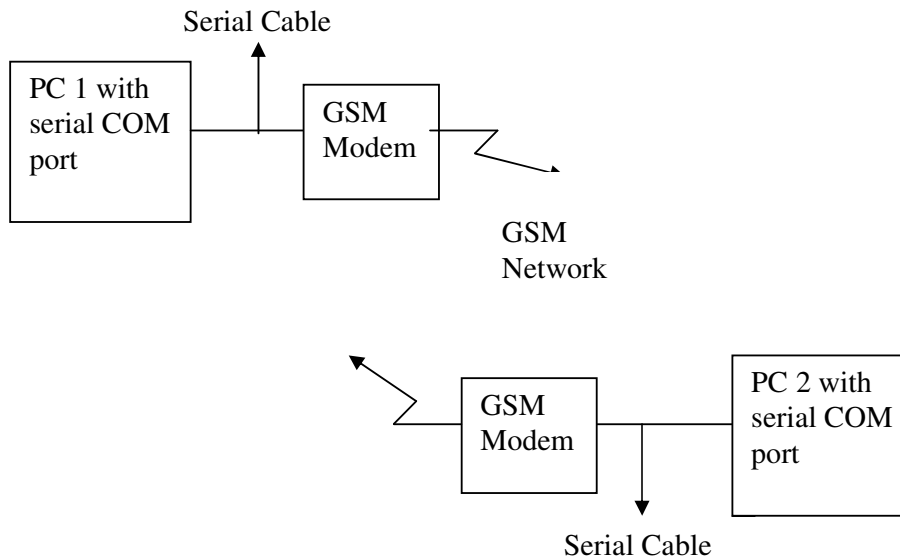


After successful configuration Modem gets connected to GPRS and following message get displayed



### (C) Data transfer between two GSM MODEMS

#### Setup Diagram –



- Connect the GSM modems to serial COM ports of two different PCs.
- Put the **"Data Mode" activated SIM** card in SIM card holder of both modems.
- Power on the both modems, wait till the time network 'LED' on the modem starts blinking slowly .Use following AT commands to activate the data call between these two modems.
  - ✓ First check basic AT commands.
  - ✓ For Auto answering, issue the command AT S0=2 on PC 2 , so the modem will answer the call after two rings.
  - ✓ For Data call use AT command ATDXXXXXXXXXX – Modem will generate data call form PC1.where XXXXXXXXXXXX is the sim card number in second modem.
  - ✓ "Connect 9600" message will appear on both hyper terminals indicating data call has started.
  - ✓ Now type the data on hyper terminal of PC1, it should be appear on another hyper terminal of PC2.
- You can transfer files between two hyper terminals using this setup.